



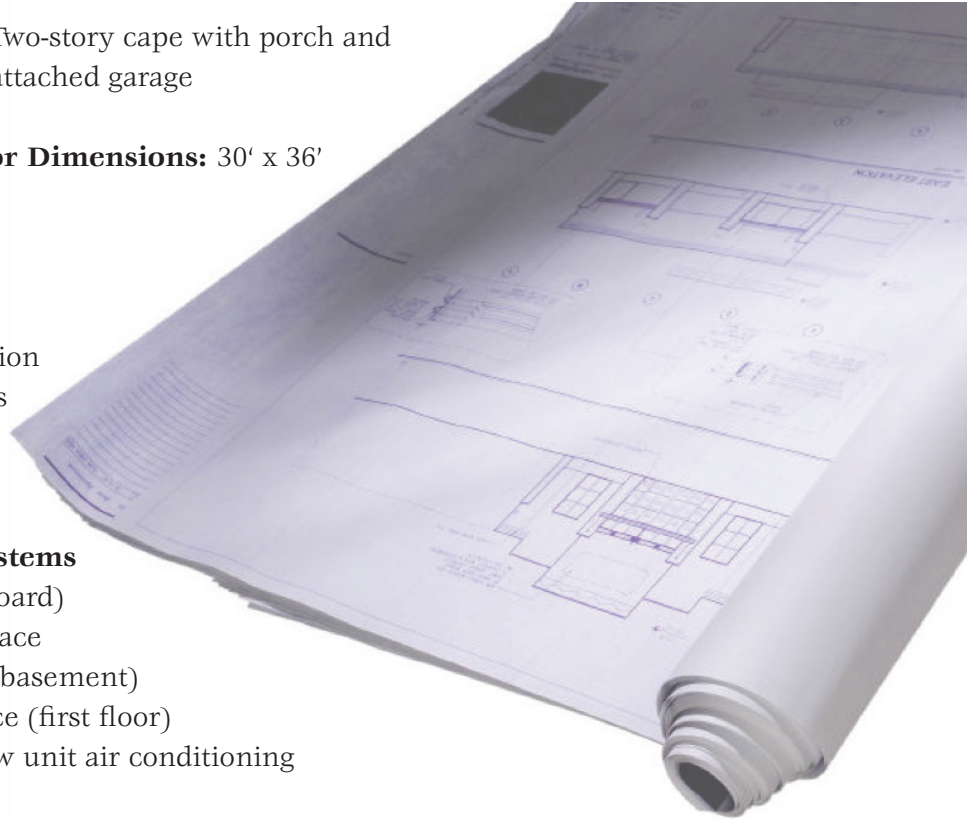
Home Specification Sheet for Addison Fox



Property Location: mid-coast Maine

Style: Two-story cape with porch and attached garage

Exterior Dimensions: 30' x 36'



Features

- Built in 1994
- Cedar sided exterior
- Full cement foundation
- 3 bedrooms / 2 baths
- 4 person dwelling
(2 adults; 2 teens)

Heating / Cooling Systems

- Oil (hot water baseboard)
- Hot water from furnace
- Back up woodstove (basement)
- Open hearth fireplace (first floor)
- No central or window unit air conditioning

Insulation

- Walls – fiberglass 6" R19
- Attic – 50% two layers of 6-8" R19; 50% three layers of 6-8" R19

Annual energy use

- Electricity (2010) – 7717 kilowatt hours
- Oil (2010) – approximately 650 gallons #2 heating oil





Maine Saves Energy

Living Space Detail • *Ceiling height 8' each level

	Dimensions	Appliances	Lighting / Other
First floor:			
Kitchen	12' x 12'3"	Refrigerator (1994) Electric stove (1994) Microwave (1994) Dishwasher (2005)	6 recessed ceiling lights (CFL) 1 under counter (florescent) 1 range light (incandescent) with ventilation hood
Dining / Living	13'9" x 29'	TV (cathode ray)	1 hanging light fixture (1 CFL) 2 tabletop lamps (1 CFL each) 1 floor lamp (1 CFL) 55 gallon fish tank with pump and heater electric dog wireless fence base unit
Mud room/ Laundry	8' x 5'6"	Front loading washer (2010) Electric dryer (1994)	2 recessed ceiling lights (CFL)
Bathroom (sink, toilet, shower)			1 ceiling light / fan (incandescent) Vanity lighting (3CFLs)
Den	13'9" X 11	TV (cathode ray) Satellite cable box DVD player Wireless internet router	2 recessed ceiling lights (CFL) 2 under counter (florescent) 1 floor lamp (1 CFL)
Entry / stairs			2 ceiling light fixtures / (4 incandescent bulbs) 1 fluorescent closet light
Second floor:			
Bedroom 1	15' X 16'6"		1 overhead ceiling light (2 CFLs) 1 recessed ceiling light (CFL) 3 tabletop lamps (1 CFL each) 1 fluorescent closet light
Bedroom 2	13' x 11'6"	TV (cathode ray) Gaming system Sound system	1 overhead ceiling light (2 CFLs) 1 fluorescent closet light
Bedroom 3	11'3" x 12'6"	TV (LED) Gaming system DVD player	1 overhead ceiling light (2 CFLs) 1 recessed ceiling light (CFL) 2 tabletop lamps (CFL) 1 fluorescent closet light
Bathroom (double sink, toilet, shower, whirlpool tub)			1 overhead ceiling light (2 CFLs) with ventilation fan 2 recessed ceiling lights (CFL) vanity lighting (8 CFLs)
Basement (partially finished)	13'9" x 29'	TV (cathode ray) Satellite cable box Treadmill Furnace Hot water heater Upright freezer (not in use)	3 overhead ceiling lights (6 CFLs) 1 hallway light (1 incandescent) 1 fluorescent shop light (two tubes) 2 overhead ceiling lights (CFL)
Garage	23'4" x 21'4"		4 overhead lights (CFLs)
Unfinished attic			1 light fixture (incandescent)
Porch / entries			4 recessed lights (5 incandescent floods) 6 exterior light fixtures (6 incandescent) 4 outdoor floods (incandescent)
Other:			Water pump